

infotec

Digital Network

*Digital solutions for today's office:
Document server, print, copy, fax,
scan, scan-to-email*

infotec IS 2122 / IS 2127





All the flexibility and functionality you need and all in one system

Copy, print, scan and fax. Logically designed for central use on a network, the infotec IS 2122 and IS 2127 multifunctional black & white digital systems save valuable time and money thanks to state-of-the-art, web-based document management.

Flexible interfaces guarantee seamless integration into any IT environment allowing more efficient workflows, such as the direct scanning and sending of documents as email attachments, or paperless and serverless fax communication.

infotec IS 2122, IS 2127 – user friendly solutions for today's office.



Fast, economical digital printing and copying:

- IS 2122: up to 22 pages per minute
IS 2127: up to 27 pages per minute
- Up to 600 dpi resolution, 256 grey scales
- Powerful sorting and finishing options
- Flexible paper capacity up to a max. of 3,600 sheets



Network printing at copying prices:

- Printing up to A3 format – including duplex
- Driver interface optimised for common office applications (RPCS)
- Confidential printing
- Combine print jobs from different applications (job binding with RPCS)
- Flexible interfaces:
Ethernet 100 Base-TX/10 Base-T, parallel bi-directional
Options: Wireless LAN IEEE802.11b, USB 2.0, FireWire IEEE 1394 or Bluetooth



Network-based fax communication:

- Multi-port thanks to additional G3 line
- Paperless/serverless faxing
- Up to 2,000 names and speed dials
- LAN fax with editor for cover page editing



Scanning in black & white with up to 600 dpi resolution:

- Scanning in TIFF, TIFF-F, Multi-page, PDF, JPEG
- Network scanning with ScanRouter
- Scan to folder
- Scan-to-email without installing additional software
- TWAIN driver



Central document management across the entire network:

- State-of-the-art web-based document management with web-image monitor: archiving, distribution and processing of files and documents on an optional hard disk without installing additional software
- Merging of file formats from different applications to form a single print job

Designed without compromise

The infotec IS 2122 and IS 2127 are the perfect systems for efficient information workflow in the office.

Far surpassing the functionality of regular multifunctionals, these systems offer a high degree of flexibility, ease of use and absolute reliability.

Thanks to the innovative GW (Ground Works) controller architecture, the standard system – a 600 dpi digital copier – can be extended with an optional hard disk and intelligent software upgrades to allow multifunctional services such as document server, printing, scanning, scan-to-email, scan-to-folder, merge files, filing of documents or files, electronic network distribution, and faxing as well as paperless and serverless PC or LAN faxing.

The result, a central information interface supporting and streamlining document workflow across workgroups, departments or entire networks. And in addition to tried and tested features such as copying, printing and faxing, this added functionality creates new opportunities for efficient and flexible working in any office environment.



Maximum productivity right from the start

- Quick-Start-Up technology: warm-up time approx. 15 sec.; first copy in approx.
- Scan once - print many: documents are scanned once but can be continuously output at up to 22/27 pages per minute in consistent 600 dpi copying resolution
- Up to 22/27 pages per minute in simplex and duplex operation
- Fast feeding of numerous sets of documents via the ARDF at full machine speed
- Special digital functions such as text, text/photo or photo mode, automatic paper format selection (including for letter formats), automatic image rotation and much more
- Electronic sorting of complete sets of documents
- Flexible paper capacity of 1000 sheets standard, up to a maximum of 3100 sheets
- 1000- or 500-sheet finisher





Printing for today's office

Printing at copying price

With the optional printer/scanner module the IS 2122 and IS 2127 can be turned into fast network printers with high output speeds, document processing and finishing – and all this at a comparable cost per page to copying.

RPCS: Increased convenience for office printing

The RPCS printer language (Refined Printing Command Stream) has been specifically developed for printing from popular office applications such as Word, Excel or PowerPoint. RPCS includes a convenient driver interface which can be adapted by any user to suit specific printing needs.

A click on the appropriate RPCS symbol is all it takes to select any of the finishing functions.

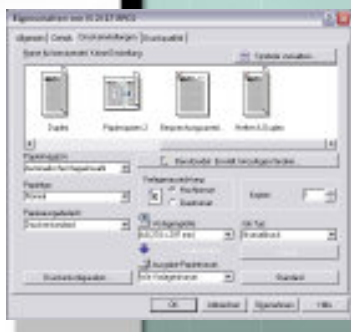
RPCS also include PCL5e, PCL6 and optionally Adobe PS 3, making printing possible from all common operating systems such as Win 95/98/ Win Me/2000, XP, NT4.0 as well as Unix and Macintosh.

Complete integration

Universal interfaces allow platform-independent networking between different applications:

- Bi-directional parallel interface for direct connection to the workplace PC/print-server as standard
- Ethernet 100Base-TX/10Base-T for interfacing to existing networks as standard

RPCS allows complete print jobs, including all finishing options, to be started quickly and conveniently straight from the desktop at the click of a mouse using pre-set or self-defined symbols





- Optional interfaces for optimum flexibility: Wireless LAN IEEE802.11b* or Bluetooth* for wireless communication, FireWire IEEE 1394* for setting up a separate network, USB 2.0*
- Support for common network protocols such as TCP/IP, IPX/SPX, AppleTalk, SMB and NetBEUI (only with SmartNet Monitor)

**Only one optional interface can be installed*

State-of-the-art web-based document and system management

Web Image Monitor is the ultimate user-friendly tool. Using a web browser such as Internet Explorer or Netscape, network settings can be altered, managed, processed, forwarded, deleted. Files stored on the document server can be printed out, the email address book can be managed and the job log or system status can be monitored directly from the desktop, without the need to install additional software. In addition, incoming fax messages can be viewed giving you the option to print, download, delete or forward the message.



Up-to-date communication

A new way of scanning

With the optional printer/scanner module, the IS 2122, and IS 2127 are transformed into genuine network scanners, with scanning speeds of up to 32 pages (*TWAIN driver*) per minute and a resolution of up to 600 dpi.

Scan-to-email: All scanned data can be sent as email attachments to any email address via the Internet or intranet. Company address book email addresses can be accessed via LDAP support.

Scan-to-folder: Using the document glass or the ARDF, convert paper-bound documents into digital data as a TIFF, multi-page TIFF, JPEG or PDF file and transfer to directories using SMB or FTP protocol. All scanned data can also be stored straight onto the optional hard disk and processed at a later date.

Paperless, serverless fax dispatch



With its powerful and convenient functions, the fax option offers new and efficient network-oriented fax communication for workgroups. Thanks to the multiport (option), two G3 lines can be made available simultaneously.

Incoming fax data can be stored in the SAF memory without an additional server. With Web Image Monitor or DeskTopBinder, fax data can be viewed, deleted or printed out* directly from the desktop or downloaded to your own PC.

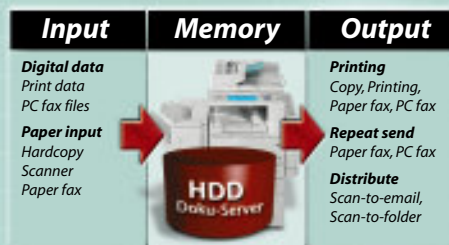
PC faxing

A PC faxing function comes as standard with the optional fax and printer/scanner module. This allows fax messages to be sent directly from the PC via a LAN, removing the need to print the fax before sending it. The editing function of the LAN fax driver also allows a personalised cover sheet to be created. Address book data can be imported and exported via CSV support.

**Web Image Monitor only*



Document management



The document server:

Optimum workflow organisation

The infotec printing and copying systems IS 2122, and IS 2127 can handle the needs of the most demanding businesses.

With an optional 20 GB hard disk, the systems provide an efficient central document server for the entire work group allowing:

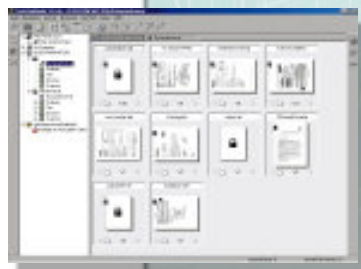
- Management of all filed documents
- Filing, storing, duplication, repeat printing, searching, deletion and transmission of files and documents
- Different files or file formats to be combined or merged with one another to form a single print job

The optional hard disk also extends the printer functionality allowing test printouts and confidential printing.

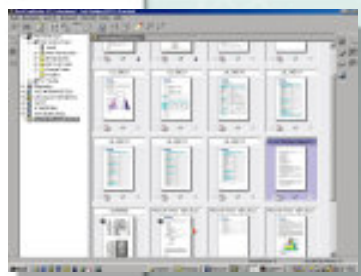
SmartNet Monitor monitors the status of digital systems and print jobs in the network



ScanRouter Lite automatically forwards scanned documents to the desired recipient in the network (not illustrated)



With DeskTopBinder Lite documents can be viewed, edited, printed and electronically distributed



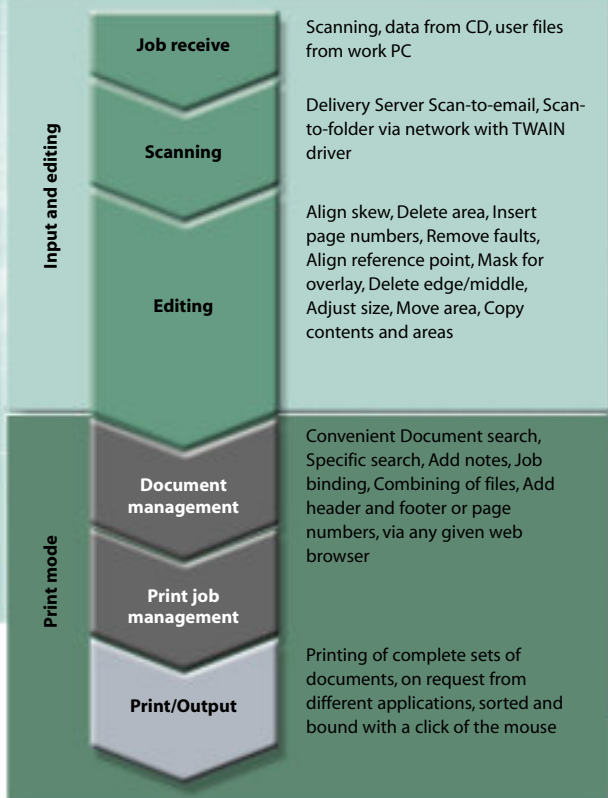
Job Binder combines files from different sources and applications to form a single print job.



Convenient, transparent document management

Included with the print and scan option is a range of user-friendly software – ScanRouter Lite, DeskTopBinder Lite, SmartNet Monitor and more. These extra functionalities enable network printing and scanning, as well as management of files and convenient, clear document storage and all from the desktop.

Software package functions



Features and benefits

Digital technology	High quality input and output (copy and printing 600 dpi), wide range of editing functions, stamp functions, electronic sorting, text, text/photo and photo mode, numerous special functions
Scan once - print many	Preserves the source document, uniform output quality, reduced sound level
Touch-Screen LCD Display	Simple and convenient control, clear operator guide
Innovative GW architecture	Extend the central control unit to include fax, printer and scanner functions
Powerful software components	Convenient document management directly from the desktop
Browser-based Web Image Monitor, e.g. via Internet Explorer or Netscape	Without installing additional software: <ul style="list-style-type: none"> – Read, print, delete and download from the document server – Read, download, print and delete incoming fax messages – Address book control for scan-to-email – Network settings, job log, machine status – Security settings: password, access control, IPP authorisation
Document server 20 GB hard disk (option)	Intelligent management (scanning, storage, archiving and distribution) of files and documents across the entire network <ul style="list-style-type: none"> Access from all connected PCs Combining of copy and print jobs Merging of files and documents from different applications Extended printing functions: confidential printing, test printing
Automatic document feeder	Scan up to 50 source documents
Duplex unit	Automatic two-sided copying and printing with up to 22/27 pages per minute
Paper supply up to 3100 sheets	Non-stop printing and copying – even for large numbers of copies
Paper feed from up to five different trays (inc. bypass)	Flexible choice of materials, up to five types of paper can be processed simultaneously in a single copying job
Online finishing	A 1000 or 500-sheet finisher allows sorting and binding of entire document sets directly from the desktop at the click of a mouse
Printer module (option)	Seamless integration into any IT environment and cross-platform printing
Flexible page description languages	<ul style="list-style-type: none"> – PCL5e, PCL6 and Adobe PS 3 (optional) guarantee printing from common Windows, Mac and Linux applications – The easy to use RPCS exclusively supports Windows applications, increasing the data flow
Printer/scanner module	Up to 600 dpi network scanner, scan-to-folder and scan-to-email, without additional software
Convenience fax module	Confidential send and receive, double-sided transmission (with ARDF and memory expansion) as well as integrated telephone directory functions (up to 2,000 fax numbers)

Technical specifications IS 2122 / IS 2127

Technology

- Flatbed scanner with movable CCD image-sensing region
- Electro-photographic dual laser

Functions

- Digital copier
- Laser printer
- Scanner
- Document server
- Super G3 fax

Resolution

- Copying: up to 600 dpi, 256 grey scales
- Printing: up to 600 dpi
- Scanning: 100 to 600 dpi, 256 graduations
- Faxing: up to 400 x 400 dpi

Output speed

- IS 2122: up to 22 A4 pages per minute simplex/duplex
- IS 2127: up to 27 A4 pages per minute simplex/duplex

Paper: capacity, formats and weights

- Standard**
 - Tray 1 1x 500 sheets, A5 - A3, 60 - 105 gsm
 - Tray 2 1x 500 sheets, A6 - A3, 52 - 157 gsm
- Options**
 - Trays: 2x 500 sheets, A5 - A3, 60 - 105 gsm
 - Bypass: 100 sheets, A6 - A3, 52 - 157 gsm
 - Duplex: A5 - A3, 64 - 105 gsm
 - Large-capacity 2,000 sheets, A4, 60 - 105 gsm tray:

Output capacity (A4, 80 gsm, unbound)

- Standard: 500 sheets (250 sheets with bridge unit)
- Internal stacker for fax output (option): 125 sheets
- Finisher SR790 (option): 1000 sheets
- Finisher SR820 (option): 500 sheets

Document server

- Maximum storage capacity: 20 GB copier pages: 2500^{*1}, print pages: 9000^{*2} Scan-/fax pages: 9000^{*3}
- Central storage and control: archive, forward, repeat print, change file name, delete file, process files, merge documents, scan to document server
- Operation: Direct operation via display screen; via any web browser^{*4}; directly from desktop with web-image monitor (no need to install additional software)

Dimensions, weight, power supply

- Dimensions (W x D x H): 550 mm x 604 mm x 980 mm
- Weight: < 62 Kg
- Power supply: 220-240V, 50/60 Hz
- Power consumption: < 1.5 KW
- Electronic and mechanical counters

Software tools

- DeskTopBinder V2 Lite, ScanRouter V2 Lite
- SmartNet Monitor for Client and Admin
- LAN-Fax M3, 1394 utility
- Printer utilities for Mac and TWAIN drivers

^{**1}1. ITUT No.4 chart, ^{*2}2. Lyla chart, ^{*3}3. ITUT No. 1/200dpi MMR chart
^{**4}4. Microsoft Explorer version 5.5 or higher, Netscape version 6.2 or higher

Copier specifications

- First copy: IS 2122/2127: approx. 4.9 sec.
- Warm-up time: all models: approx. 15 sec.
- 64 MB working memory as standard
- Copy pre-selection up to 99 copies (simplex, duplex)
- User guidance via monochrome LCD display
- Copier mode: Text, photo, text/photo (print, copy, photography), card mode, light colours, 2nd generation.
- ADS (Auto Density)
- Manual or automatic density selection
- Zoom 25% to max. 400% in 1% steps
- Enlarge/Reduce in 12 fixed stages
- Cover page function, separator sheet for OHP transparencies
- Archiving (on optional hard disk)
- Job start while scanning source documents

Special functions

- Text, photo, text/photo mode, generation mode, pastel mode for source documents with light colours
- Delete edge/middle, image rotation, positive/negative centring, image brightness, contrast.
- Combining source documents: Simplex: 2 in 1, 4 in 1, 8 in 1 Duplex (option): 4 in 1, 8 in 1, 16 in 1

Convenience functions

- 100 user codes (max. 500 with optional memory expansion)
- Electronic sorting, rotation sorting
- 1 scan - multiple copies, test printing
- Auto start, job pre-selection
- Automatic paper selection and paper alignment
- Numerous stamp functions
- Pause/interruption, energy-saving mode

Options

(Quantity figures for 80gsm paper weight)

- 1) ARDF: 50 sheets, feeding speed corresponds 1:1 to the machine speed
Simplex source documents: A5 - A3, 40-128gsm
Duplex source documents: A5 - A3, 52-105 gsm
- 2) Large-capacity tray (RT45) 2,000 sheets
- 3) 1,000-sheet finisher (SR790), up to 50 sheet binding in up to 3 positions
- 4) 500-sheet finisher (SR820) 500 sheets up to 30 sheet binding (A4)
- 5) Duplex unit

Also available (not illustrated)

- Glass plate cover
- Bypass
- Paper trays 2x 500 sheets
- Bridge unit for finisher 1,000 and 500 sheets
- Internal stacker for fax output 125 sheets
- Printer-scanner module
- 20 GB hard disk expansion
- Fax unit, additional G3 module
- 32 MB SAF memory

Printer/Scanner module (P/S module option)

- CPU RM5261A, 400 MHz
- Prerequisite 192 MB printer memory (64 MB standard 128 MB additional mandatory expansion)
- 20 GB hard disk (standard for P/S module)
- RPCS, PCL6, PCL5e, Adobe PostScript 3 (option)
- Network interface: Standard:
 - 100BASE-TX/10BASE-T (Ethernet RJ-45)
 - Parallel bi-directional IEEE 1284 (ECP)
 Options:
 - FireWire IEEE 1394 (2 ports) or Wireless LAN IEEE802.11b or USB 2.0 or Bluetooth
- TCP/IP, IPX/SPX, SMB (NetBIOS via T/UP/IP) AppleTalk (Auto Switching)
- Special features: MIB support, web-image monitor, confidential printing, job binding (with RPCS)

Printer drivers

- Win9x/Me/2000/XP/NT4.0, Win Server 2003
- Unix, Novell Netware
- Mac (only PS3 option) OS 8.6 - 9.2x, OS X from 10.1 on

Scanning

- Scanning via the document glass
- Scanning via the ARDF document feeder
- Scan-to-email (2000 email addresses can be stored, LDAP compatible), scan-to-folder (SMB/FTP), internet faxing
- Scan mode: text, text/photo, photo, grey scales
- Resolution: 100 to 600 dpi, 256 grey scales
- Single-page: TIFF, JPEG, Multi-page TIFF, PDF

Fax specifications (option)

- Compatibility: ITU-T (CCITT) G3, optional multi-port, additional G3 line
- Resolution: 8 x 3.85, 8 x 7.7 l/mm, 200 x 200/100 dpi (standard) 8 x 15.4, 16 x 15.4 l/mm, 400 x 400 dpi (option)
- Transmission time: 3 sec. (200x100dpi), 2 sec. with JBIG
- Scan speed: approx. 0.43 sec. (A4)
- Modem speed: 33,600 bps
- Compression method: MH/MR/MMR, Optional JBIG
- SAF memory, standard: 4MB (320 pages) Maximum: 28 MB* (2240 pages)
- Memory back-up: 1 hour
- 100 user programmes (max. 500 programmes)
- Speed dials, name dials (std.) 500, 1,200 with JBIG module, 2,000 with 20 GB hard disk
- 100 group dials, (max. 500 numbers/group)
- Numerous convenience functions such as dual access, forwarding, confidential send and receive, double-sided send, fax stamp (with optional hard disk), PC faxing, internet faxing, fax-to-email, email-to-fax, paper/serverless faxing without PC fax software

*32 MB SAF memory required



Contact us

infotec