

infotec

Digital Network

*Flexible and productive
printing, copying, faxing
and scanning*

infotec IS 2032





***Superb flexibility -
exactly right for our team***



Fast and affordable digital copying:

- 32 ppm simplex and duplex
- Up to 600 dpi resolution
- Powerful sorting and finishing options
- Up to 3100 sheets of flexible paper storage



The solution for demanding network printing:

- 32 ppm A4 at 600 dpi
- Printing up to A3 size: including duplex
- Flexible interfaces for total network support
- Driver interface optimised specifically for current Office applications, high data throughput
- Low costs: printing for the price of a copy



Time-saving document management :

- Archiving and distribution of files and documents on optional hard disk
- User-friendly control from the PC
- Combination of file formats from different applications in a single print job



Fast and easy fax communication :

- Super G3 and/or optional ISDN G4, Multi-Port
- 400 stored dial buttons (1200 available as an option)
- PC fax with combined print and fax module



Quality scanning at a resolution of 600 dpi:

- Fast scanning to generate TIFF, TIFF-F, Multipage, PDF, JPEG
- 256 greyscales



Good concept – no compromise

The *infotec IS 2032* system is a perfect all-round multi-functional device designed to handle information transfer in the office. Having grown far beyond the functionality of a mere multifunctional copier, the *infotec IS 2032* offers superb flexibility, easy operation and absolute reliability.

Thanks to the innovative "GW controller architecture" (Ground Works), the basic version a 600 dpi digital copier – can be expanded with an optional hard disk and appropriate software upgrades, permitting multifunctional services such as document server, printing, scanning, electronic distribution, file concatenation, document or file storage, faxing and PC faxing.

The result: the *infotec IS 2032* print and copy system acts as a central information interface on the network, supporting and streamlining document flow for single workgroups or entire departments. Thus new possibilities open up for efficient and flexible applications in your office environment, along with the tried and tested functions of copying, printing and faxing.

Automatic paper format conversion

Using this practical function, print jobs sent in letter format can be automatically converted to A4 if there is no letter paper to hand. The reverse is also true: A4 can be automatically converted to letter format. This function is particularly useful when information and documents created in letter format are to be printed from the Internet.

You control the production of your documents simply and clearly, by inputting directly into the generously proportioned touch screen user interface. At the touch of a button, choose easily from the individual functions, such as copy, print, document server, fax and scan.



High productivity starts with copying

Even in the basic digital copier version, the *infotec IS 2032* print and copy system come with functions for demanding users, particularly useful for meeting the needs of workgroups in today's business climate:

- Time-saving Quick StartUp technology: Warm-up approx. 15 sec.; first copy in approx. 4.5 sec.
- Scan once - print many: documentation, once scanned in, can be reproduced with consistently high quality at 600 dpi, at a continuously sustained rate of 32 ppm.
- Double-sided printing with no loss of time: 32 ppm simplex and duplex operation.
- Rapid loading of extensive document sets using ARDF at the full machine speed of 32 ppm.
- Numerous special digital functions, such as text mode, text/photo mode or photo mode, automatic paper selection (even for letter format), automatic image rotation, plus many more.
- Electronic sorting of complete document sets
- Flexible paper store of 1000 pages standard, expandable up to a maximum of 3100 pages.
- 1000 or 500-page finisher available for document finishing.



Efficient working using Office



Printing for the price of a copy:

With the optional print module, you gain a network printer for document processing and finishing which is far superior to any conventional laser printer: and yet the cost per page is comparable to that of a copier.

Printing from Office – nothing simpler!

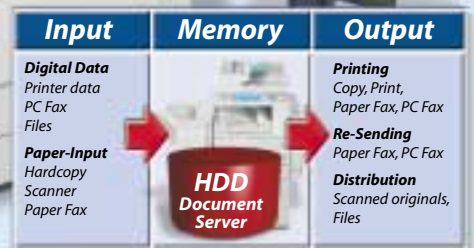
Complete print jobs, including all finishing functions, can be started from your workstation simply by clicking on predefined or user-defined icons, particularly in the case of routine document production from current Office applications such as Word, Excel and PowerPoint. And all thanks to the extremely easy-to-use RPCS (Refined Printing Command Stream) driver interface. Even printing correctly imposed brochures is possible with a single click.

The industry-standard printer languages include PCL5e, PCL6 and optionally PS 3, thereby permitting printing from Win 9x/Me, Win 2000/XP, Win NT4.0, Mac and Unix operating systems.

Full network support

A complete range of interfaces permits platform-independent mixing of different applications:

- Uncomplicated connection to a single-user PC or to all current networks:
 - Standard bi-directional parallel interface for direct connection to a workstation / print server.
 - Optional Ethernet 100Base-TX/10Base-T Network interface card to link into all current networks.
 - Optional IEEE 1394 FireWire interface for the creation of a separate network with a data transfer rate of up to 400 Mbps.
- Support for current network protocols such as TCP/IP, IPX/SPX, AppleTalk and NetBEUI (with SmartNet Monitor only).



The document server: create optimised work processes

Using the optional 6 GB hard disk, the *infotec IS 2032* print and copy system becomes an effective and centralised document server which is available to the entire workgroup

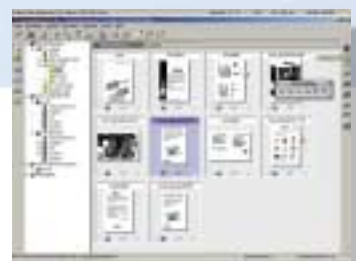
This enables:

- the administration and control of all jobs
- the saving, storage, duplication, re-printing, searching, deleting and transferring of files and documents
- the combining and/or mixing of different files or file formats to produce a single print job, irrespective of whether these are graphic files, complete Office files, text documents, spread sheets or presentations.

The enhanced printer functions, such as test printing, confidential printing, electronic sorting or macro and font download, are a further advantage of the optional hard disk.

Easy and transparent document management on the network

The software package supplied with the print solution is the absolute peak of user-friendliness, containing ScanRouter V2 lite, DeskTopBinder V2 lite, SmartNet Monitor and lots of utilities. It allows network printing and network scanning, as well as administration of the files and documents stored on the document server, all carried out easily and transparently from your own workstation.



Using DeskTopBinder V2 Lite, documents can be viewed, processed, printed and electronically distributed, all from your workstation.



Scanning – as easy as copying

With the optional print / scanner module, you can expand the *infotec IS 2032* into a true network scanner. Using the platen glass or the document feeder, up to 29 sheets (Twain drivers) or 42 sheets (ScanRouter V2 lite) can be scanned in per minute, sent over the network in digital form, even as e-mail, or saved to the document server for later use. Images and graphics are processed in brilliant 600 dpi and 256 greyscales.



Faxing without compromise

The fax option offers workgroups an efficient fax communication option, with powerful yet simple functionality. Thanks to Multi-Port, you can make use of up to three lines simultaneously, and a line for ISDN G4 is also made available. This is what you stand to gain:

- Faxes can be received during fax transmission.
- During a transfer from memory, you can still send out a further fax message using direct transfer. You will not have to wait for the device to become free again.

Send-now, send-later, confidential send and receive, logged fax, and duplex transfer (with ARDF), as well as integrated directory functions (with up to 1200 fax numbers) are just a few of the numerous functions that make your life easier.

PC faxing

A PC fax function is available as standard in combination with the optional print and fax module. Using this, you can send faxes directly from your PC via the LAN, thereby avoiding the need to print out your fax and reducing the number of steps you need to go through.



Characteristics and features

Digital technology	High quality input and output (copying and printing at 600 dpi), wide range of editing functions, various imprint functions, electronic sorting, text mode, text/photo mode or photo mode,
Scan once - print many	Preserves original documents, output of constant quality, reduced noise levels.
Touch screen LCD display	Simple and straightforward control of functions, full text user guidance.
Innovative GW architecture	Central digital copier unit can be easily expanded with software upgrades for fax, print and scanner functions.
Flexible storage expansion	- + 32 MB copier memory: allows electronic sorting, A3 duplex, duplex over ARDF, imprint functions - + 32 MB fax memory (for approx. 1000 pages) - + 64 MB expanded copier memory and/or printer and scanner memory: allows the use of the print and scanner module - + 6 GB hard disk: intelligent document server
Powerful software components	Straightforward document management directly from the workstation.



6 GB hard disk (optional)	- Real multi-tasking: concurrent scanning and printing - Document server: combines copy and print jobs, the saving of documents, files, faxes and job settings, and the naming and re-naming of files. - Expanded imprint functions: background pagination, pre-defined imprints, user-defined imprints - Expanded printer functionality: confidential printing, test printing, electronic sorting, download of macros and fonts
Automatic document loading	Up to 50 original documents, even double-sided, can be read in at once.
Duplex unit (optional)	Automatic double-sided copying and printing at up to 32 ppm.
Paper store up to 3100 pages	Even long print and copy runs can be made without interruptions
Paper loading from up to 4 different trays	Flexible paper variety. Up to 4 paper types can be processed concurrently in a single document.
Finishing options	A 1000 or 500-page finisher allows the sorting and stapling of complete document sets, according to requirements.
Flexible page description languages	- PCL5e, PCL6 and PostScript Level 3 (optional) guarantee the ability to print from current Windows, Mac and Linux applications. - RPCS supports only Windows applications and boosts the data flow. Supremely easy to use.
Open architecture	Platform-independent network printing.

General Specifications

Technology:	Flatbed with movable CCD image sensor field, electro-photographic 2-stage laser with dual component toner
Paper sizes/weights	DIN A5-A3, bypass A6-A3; 52-157 gsm
Paper capacity	Standard: 2 x 500-page cassettes 1st type: 1 x 500 pages, 60-105 gsm 2nd type: 1 x 500 pages, 52-157 gsm Optional: 2 x 500-page cassette, 60-105 gsm 2 x 1000-page LCT tray, 60-90 gsm 100-page bypass, 52-157 gsm Maximum: 3100 pages
Output capacity	Standard: 500 pages (with bridge unit 250 pages) Optional: Internal output tray: 125 pages 500-page finisher, or 1000-page finisher
User codes	100 (up to 500 max. with optional NV-RAM)
Document server:	With optional 6 GB hard disk
Imprint functions	Dates and pagination
+ opt. 32 MB memory	Predefined imprint functions: Copy, Urgent, Priority, For your Info, Preliminary, For internal use only, Confidential, Draft (available in English only)
+ HDD and 32/64 MB	Background pagination, user imprints and predefined imprints in 14 languages: Copy, Urgent, Priority, For your Info, Preliminary, Confidential, For internal use only
HDD (optional)	Enables document server, imprint function higher page count during electronic sorting
Size/weight	550 x 604 x 980 mm (W x H x D); < 62 kg
Energy	Consumption: 220-240 V, 50/60 Hz; requires: < 1.5 kw

Copier Specifications

First copy	Approx. 4.5 seconds, warmup time: approx. 15 seconds
Speed	Simplex & duplex: 32 A4 cpm
Duplex (optional)	Automatic (paper weights 60-105 gsm)
Resolution	Up to 600 dpi
Standard memory	32 MB (+ 32/64 MB expansion and + 6 GB HDD)
Zoom	On the imaging glass: 25-400% in 1% steps From ARDF: 25-200% in 1% steps
Enlarging/shrinking	12 set steps
User guidance	Clear, very large touch screen LCD display
User programs	100 (up to 500 with optional NV-RAM)
Multiple copies	Up to 99
Electronic sorting	Standard 50 pages, with 32 MB memory 88 pages, with optional hard disk 1000 pages
Special functions (optional)	Text mode, photo mode, text/photo mode, stretch and compress, positive / negative, image rotation, image brightness / contrast, delete border / centre
Special features	Cover sheet, separator sheet for OHP transparencies, stapling with optional finishers (single or double in 2 positions), archiving (with optional document server + optional HDD), start job while originals are being scanned.
Combinations of sources	Simplex: 2 in 1, 4 in 1, 8 in 1 Duplex: 4 in 1, 8 in 1, 16 in 1

Network scanner specifications (optional)

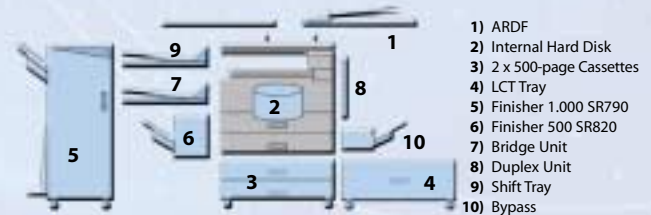
Requirements	Opt. 64 MB memory expansion, print / scanner module and optional network interface card
Scan speed	ScanRouter: 42 ppm. (A4 landscape, 200 dpi) Twain drivers: 29 ppm. (A4 landscape, 200 dpi, MMR)
Resolution	600 dpi, 256 greyscales
File formats (ScanRouter software)	TIFF and TIFF-F (MH, MR, MMR), Multipage TIFF, PDF, JPEG
Interface	Optional network interface card

Printer specifications (optional)

Requirements	Optional 64 MB memory expansion and printer or print / scanner module
Printing speed	32 A4 ppm
CPU	RM5231, 200 MHz
Printer interfaces	Standard: Parallel Port IEEE1284 (ECP) Options: network interface card: Ethernet 100Base-TX / 10Base-T; 1 x RJ45 Network interface card alternative interface: FireWire Interface IEEE1394 (6-pin), 2 ports 400 Mbps / 200 Mbps / 100 Mbps
Printer languages	PCL5e, PCL6, RPCS and PostScript 3 (optional)
Printer drivers	PCL5e/PCL6, RPCS: Win 95/98/Me/2000/XP/NT4.0 PS3: Macintosh, Windows 95/98/Me/2000/NT4.0
Printer resolution	up to 600 dpi
Memory	96 MB (32 MB std. + 64 MB optional)
Network protocols	TCP/IP, IPX/SPX, AppleTalk (auto switching), NetBEUI combined with SmartNet Monitor (optional network interface card required)
Utility programs	DeskTopBinder V2 Lite, Smart NetMonitor for admin and client, LAN-Fax M1, 1394 Utility, Mac printer utilities, TWAIN drivers and ScanRouter V2 Lite (for print / scanner module)
Control functions	Built-in WebServer; Telnet Server; Lpd daemon, IPP daemon

Fax-Specifications SUPER G3 oder ISDN G4 (Option)

Requirements	Fax KIT
Multi-Port connection	PSTN, PBX, ISDN (optional); up to 3 lines can be run concurrently (2 x G3 + 1 x G4)
Compatibility	ITU-T (CCITT) G3, G4 (optional)
Resolution	Standard: 8 x 3.85 l/mm, 200 x 200/100 dpi Optional: 8/16 x 15.4 l/mm, 400 x 400 dpi
Transfer rate	G3: 3 seconds (with optional JBIG 2 seconds) G4: 3 seconds (at 200 x 100 dpi)
Scan speed	< 0.6 seconds (at 200 x 100 dpi, A4)
Modem speed	33.6 Kbps (SUPER G3); 64 Kbps G4 (optional)
Data compression	MH, MR, MMR, JBIG (optional)
Memory capacity	Standard 2 MB SAF and 4 MB page memory; optional: 32 MB (of which 26 MB is used for SAF memory)
Backup:	1 hour
Simplified selection procedure	400 target settings; optional: 1200 target or 1000 target + 200 speed-dial (with JBIG optional)
Group select	64 groups
Comfort functions (selection)	Directory, repeat dial, send-later, send-after, dual-access, confidential send and receive, double-sided send/receive



Further options

ARDF	50 pages (80 gsm), A5-A3 Simplex: 40-128 gsm, duplex: 52-105 gsm
Internal hard disk	6 GB for document server, expanded functionality
Paper cassettes	2 x 500-page cassette, A5-A3, (60-105 gsm)
LCT tray	2 x 1000 pages, A4 (60-105 gsm)
Finisher 1000 SR790 (60-157 gsm)	1000 pages A6-A4, 500 pages A3 (80 gsm) Stapling up to 50 pages, once or twice in two positions for paper weights from 64-90 gsm
Finisher 500 SR820 (60-128 gsm)	500 pages, B5-A3 (at 80 gsm), stapling up to 30 pages A4 for paper weights from 64-90 gsm
Bridge Unit	For finisher 1000/500, storage: 250 pages A4 (52-157 gsm)
Duplex:	A5-A3 (60-105 gsm)
Shift Tray	For staggered output, 250 pages A4 (80 gsm)
Bypass	100 pages (52-157 gsm)
1 Bin Tray	125 pages, A5-A3 (60-90 gsm)
Sub-tray	for consumables

Your direct contact

infotec

www.infotec-products.com

infotec is a registered trademark of DANAKA. All facts correct at time of release. Right to changes reserved. Printed on paper bleached without chlorine. 07/2002